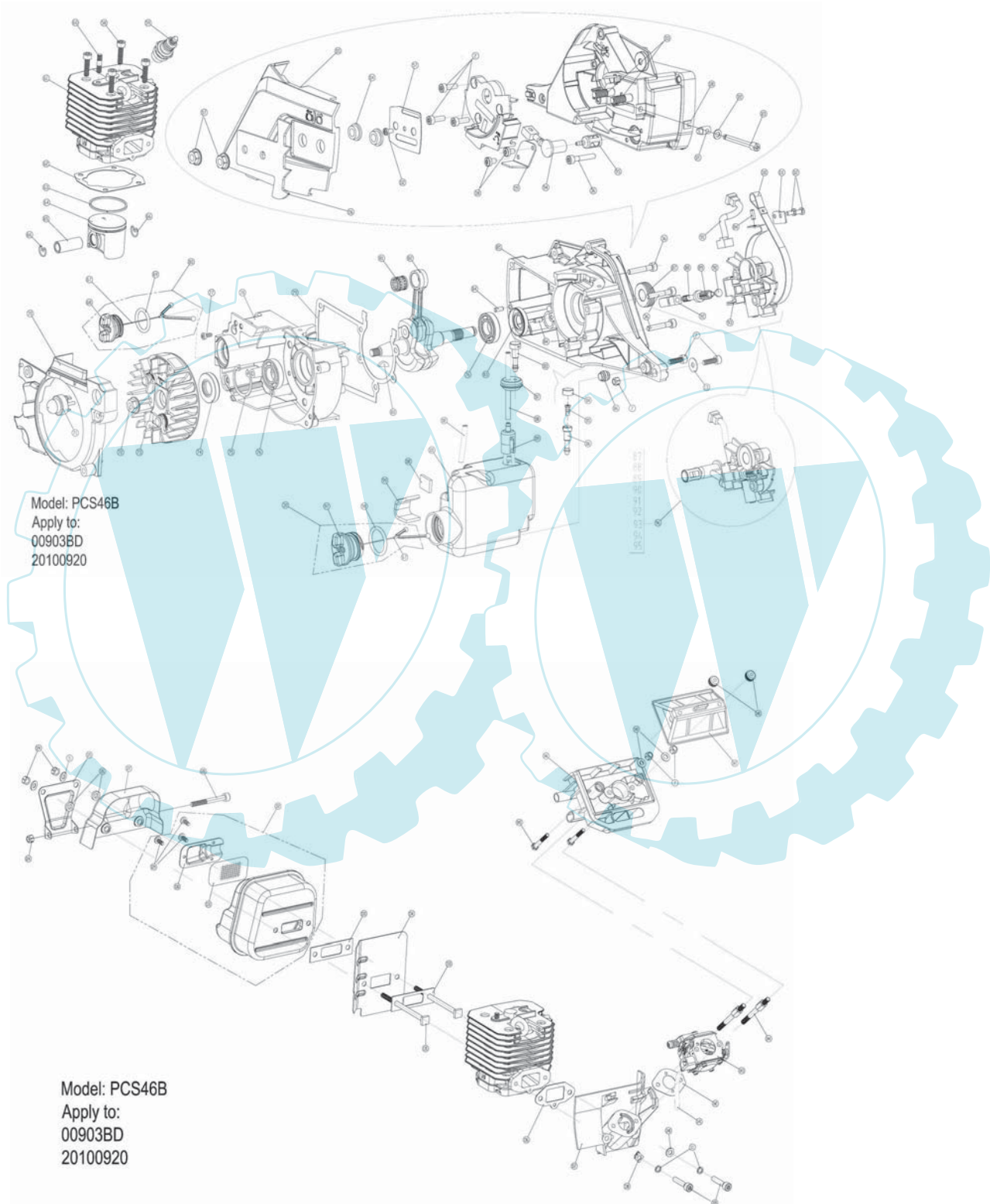




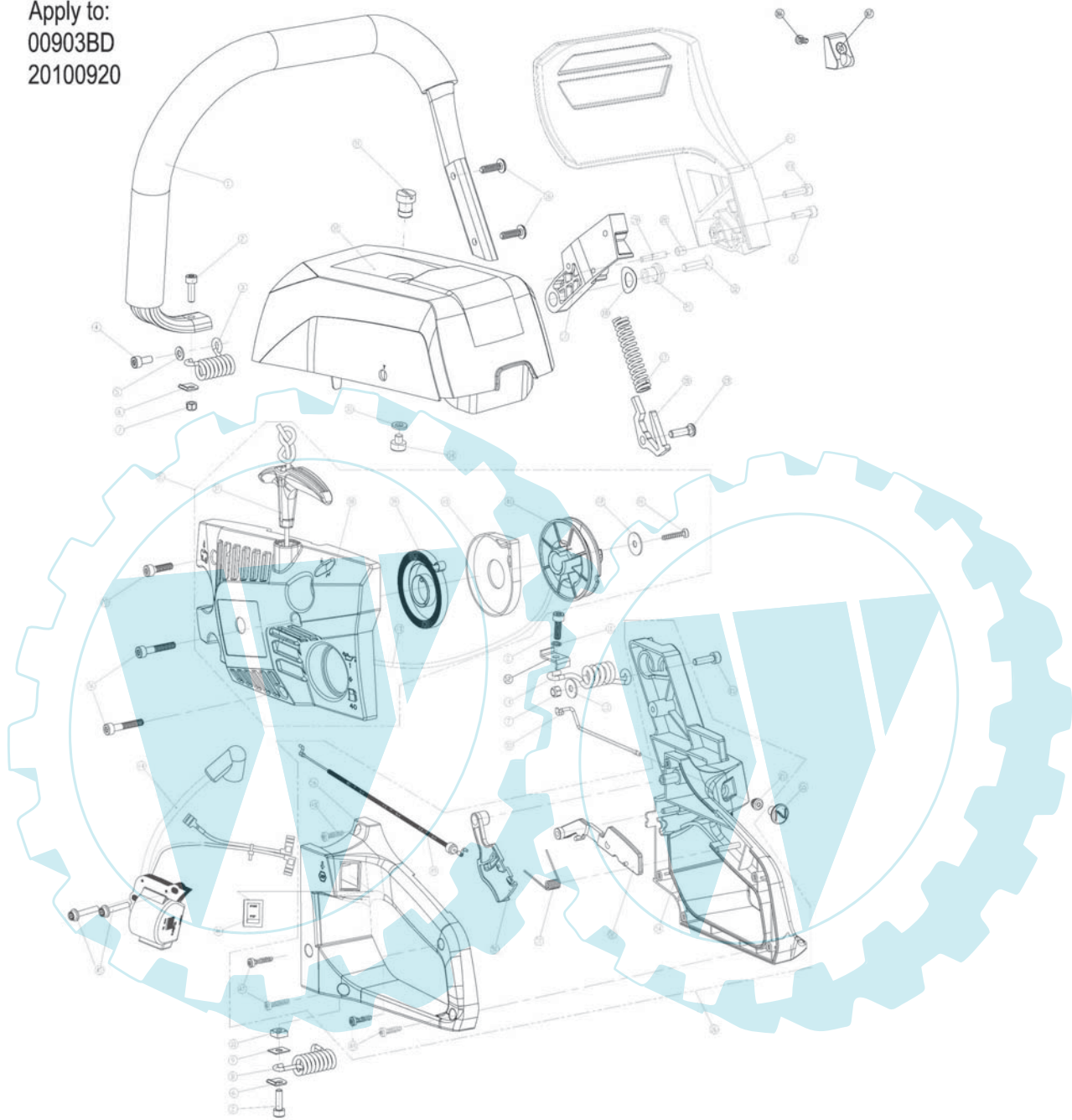
# Petrol chainsaw----f

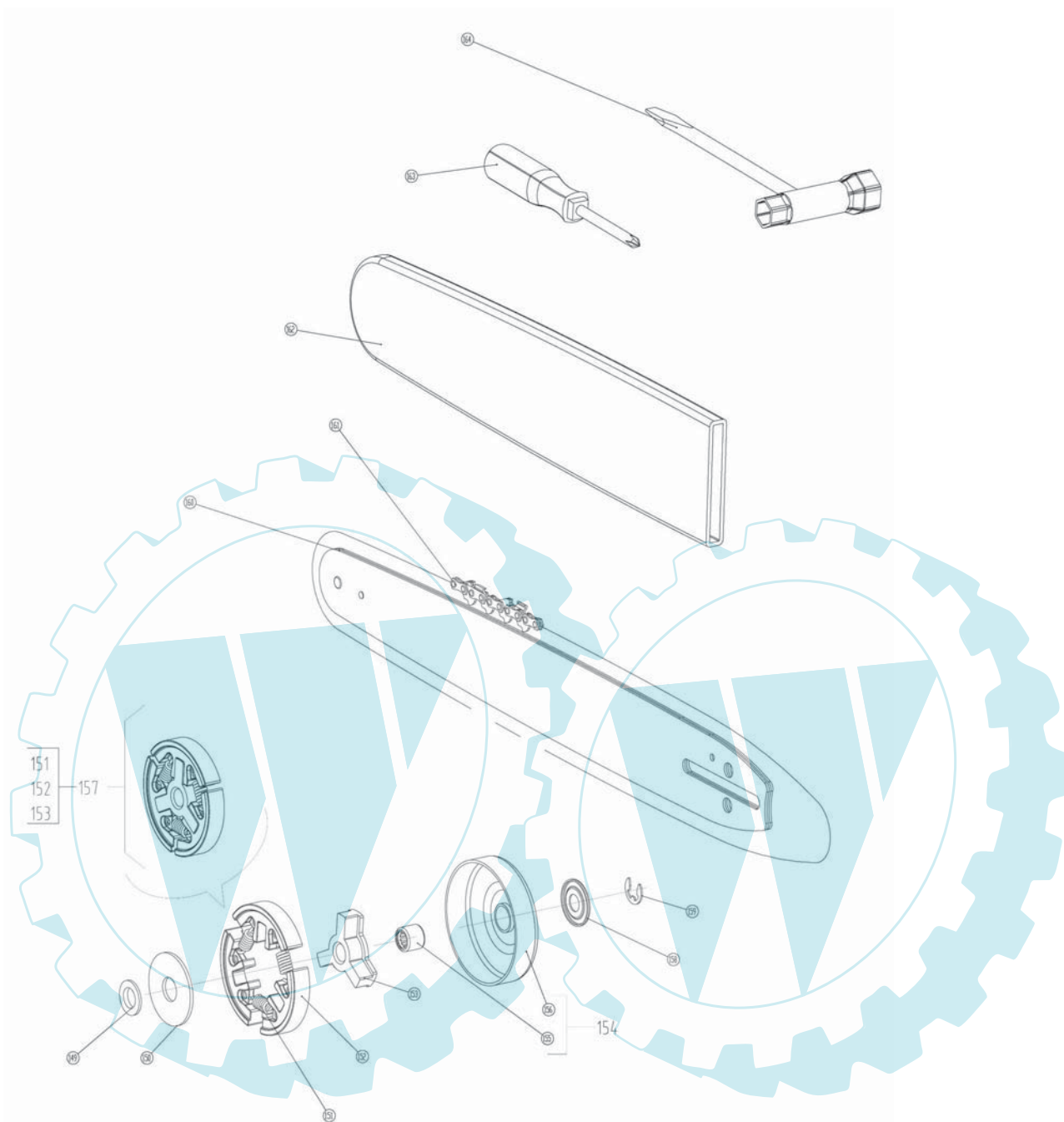
File:

Version: 1.0



Model: PCS46B  
Apply to:  
00903BD  
20100920





Model: PCS46B

Apply to:

00903BD

20100920

# Spare Parts list

File: 0040100903BD

Version: 1.0

## Petrol chainsaw----PCS46B

Pos. No	Part code	English	QTY
1	905207	front handle assy	1
2	B350012	Hexagon lobular socket head cap screws M5×16	11
3	900510	damper spring-front	1
4	B350004	Hexagon lobular socket head cap screws M5×12	1
5	900238	washer 5×10.5×1.0	3
6	900244	special washer	2
7	B217003	Prevailing torque type hexagon nuts M5	5
8	900509	damper spring-rear	1
9	900237	square washer	1
10	B200003	square nut	1
11	B500005	Single coil spring lock washers 5	3
12	903207	special washer	1
13	B503004	Plain washers 5	2
14	903511	damper spring-top	1
15	B350015	Hexagon lobular socket head cap screws M5×18	1
16	B422001F	Hexagon lobular socket pan head tapping screws 5×19	3
17	900240	brake lever	1
18	900501	dishing washer	1
19	900242	pin	1
20	900241	bush	1
21	900204	pivot-brake lever	1
22	B306004	Hexagon socket countersunk head screws	1
23	B350005C	Hexagon lobular socket head cap screws M5×20	2
24	905007R7004	front handle guard	1
25	903305	rubber holder-choke	1
26	900043	rear handle assy.	1
27	900500	spring-brake	1
28	900221	latch-brake	1
29	900220	pivot-latch	1
30	900034	fuel cap assy	1
31	903211	nut-top cover	1
32	903005R7004	top cover	1
33	B504006H	Plain washers 6	1
34	900319	damper rubber	1
35	900037R3020	starter assy.	1
36	B350007	Hexagon lobular socket head cap screws M5×30	6
37	903008	grip-starter	1
38	903004R3020	starter housing	1
39	900504	screw spring	1
40	900009	case-starter spring	1
41	905030	pulley	1
42	910215	plain washer 5×1×1.0	1

43	910903	starting rope	1
44	90595617	ignition module	1
45	901235	screw M4×20	2
46	901706R3020	switch	1
47	B422008F	Hexagon lobular socket pan head tapping screws st4×19	2
48	B422007F	Hexagon lobular socket pan head tapping screws st4×14	3
49	900905	throttle cable	1
50	905008R3020	throttle trigger	1
51	900512	spring-trigger	1
52	905009R3020	safety trigger	1
53	905204	choke lever rod	1
54	905006R7004	rear handle-right	1
55	900020R3020	choke knob	1
56	905005R7004	rear handle-left	1
57	900205	plate bar	1
58	B304003	Hexagon socket head cap screws M5×20—12.9	4
59	902700	spark plug NHSP LD L8RTF	1
60	900249	double end studs M5	1
61	903200X	cylinder	1
62	900301	gasket-cylinder	1
63	903202	piston ring	1
64	903201	piston	1
65	903203	piston pin	1
66	903500	piston pin circlip	2
67	900025	cap retainer	2
68	900003R7004	oil tank cap	1
69	B701609	O-ring 19×3.55	1
70	903007	fan housing	1
71	903302	primer	1
72	B228003	Hexagon nuts with flange M8	1
73	90595610	flywheel	1
74	900305	oil seal 32×15×6	1
75	B276022	Circlips for holes 32	1
76	B700415	Deep groove ball bearing 6002 P5/C3	2
77	900252	tapping screw 4×9	1
78	900218M	left crankcase	1
79	900300	gasket-crankcase	1
80	B701402	woodruff key 3×5×13	1
81	903600	needle cage-piston	1
82	903205	crankshaft assy.	1
83	900307	oil seal 30×15×6	1
84	B563001	Parallel pins 4×10	4
85	900219	right crankcase	1
86	900002	fuel tank retainer	1
87	900230	worm gear	1
88	900506	spring-pump piston	1
89	900903	piston assy.	1
90	900229	limited pin	1
91	900317	oil outlet tube	1

92	900228	cylinder-oil pump	1
93	900017	oil pump case	1
94	900316	oil inlet	1
95	900904	oil filter	1
96	900036	oil pump assy.	1
97	900016R7004	fuel tank cap	1
98	900311	seal ring-fuel tank cap	1
99	900902	cushion blocking 1	1
100	900908	cushion blocking 2	1
101	900013	fuel tank	1
102	901316	fuel return tube	1
103	900035	vent valve assy.	1
104	900015	valve cap	1
105	900310	vent	1
106	900014	valve body	1
107	900308	tank grommet	1
108	900309	carburetor tube	1
109	903302	fuel filter	1
110	900906	brake band	1
111	900243	special washer	1
112	B350001	Hexagon lobular socket head cap screws M4x8	3
113	B173001	double end studs M8X22-8.8	2
114	905218	bush-chain cover	1
115	903003R3020	chain cover	1
116	900210	spike bumper	1
117	B228003	Hexagon nuts with flange M8	2
118	B350003	Hexagon lobular socket head cap screws M5x8	1
119	900208	chain catcher	1
120	900207	c clip-chain adjuster	1
121	900206	adjusting stake	3
122	B504005	Plain washers 5	1
123	900247	adjusting screw	1
124	B237001	Prevailing torque type all-metal hexagon nuts, style 1 M5	3
125	905212	muffler bracket	1
126	900246	washer	2
127	900245	muffler cover	1
128	B350008	Hexagon lobular socket head cap screws M5x45	1
129	B422015F	Hexagon lobular socket pan head tapping screws st4.2x9.5	3
130	900223	guide plate	1
131	901241	spark arrestor	1
132	903220X	muffler assy.	1
133	900303	muffler gasket	2
134	905203	cooling plate	1
135	905248	square head bolt	2
136	900302	baffle plate gasket	1
137	900004	baffle plate	1
138	900704	ground terminal	1
139	B350006	Hexagon lobular socket head cap screws M5x25	2
140	B504005	Plain washers 5	3
141	900313	primer tube	1
142	900304	carburetor gasket	1

143	900900B	carburetor	1
144	900251	stud bolt	2
145	B126001	Hexagon head bolts M4×30	2
146	900001	air filter base	1
147	900005	air filter	1
148	900250	special nut M4	2
149	900200	clutch spacer	1
150	900201	clutch washer	1
151	900508A	clutch spring	3
152	900400	clutch shoe	3
153	900401	clutch carrier	1
154	900254	clutch assy.	1
155	B700456	Needle roller bearing HK1012	1
156	900235	chain sprocket	1
157	900402	clutch assy.	1
158	900202	sprocket washer	1
159	B282010	"E" rings 8	1
160	oregon 180SDEA095	guide bar	1
161	oregon 91P061X	saw chain	1
162	41001718J	chain cover	1
163	42090601	cross driver	1
164	900907	socket wrench	1
165	900034	oil cap assy	1
166	B422021F	Hexagon lobular socket pan head tapping screws st4×9	1
167	905214	weight	1

**REMARKS:**

1. The above quotations are based on RMB/EUR=9.0062  
If RMB value increase over 5%, the prices should be adjustable.
2. If main material fluctuated more than 5%, the prices should be adjustable
3. Prices normally valid for one year from the day we offer, except the case we consider it invalid.
4. All prices should be subject to our final confirmation.